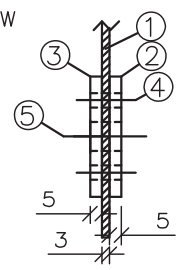
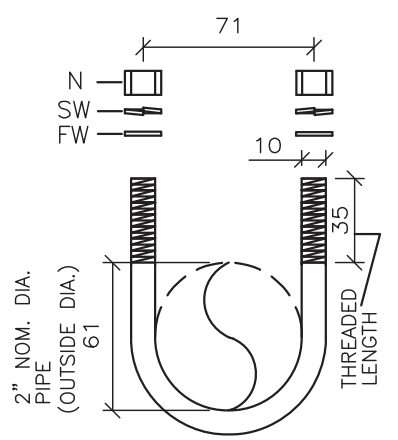


**INNER & OUTER MTG BRACKET  
SS316L  
DETAIL 1 & DETAIL 2**



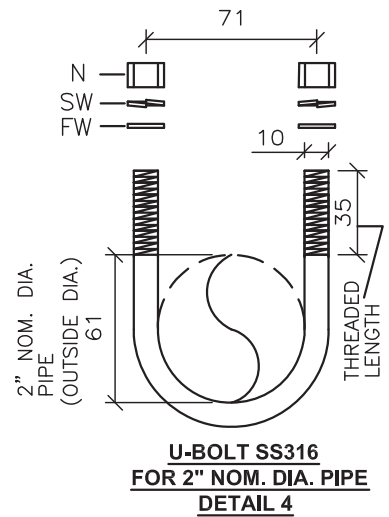
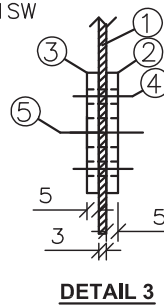
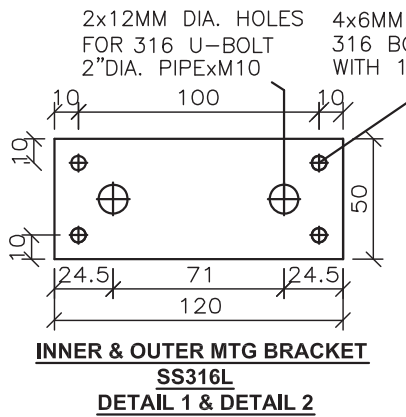
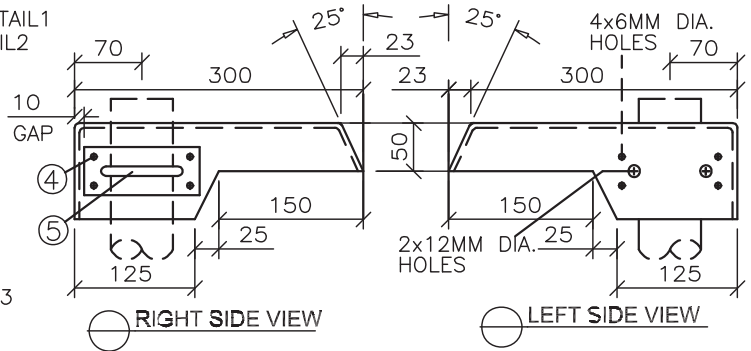
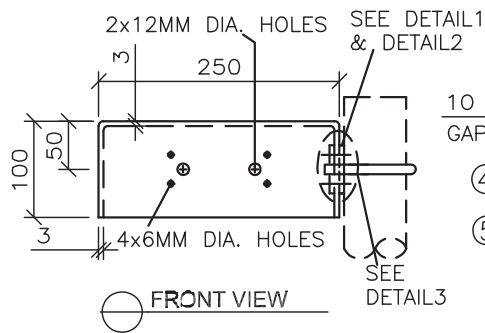
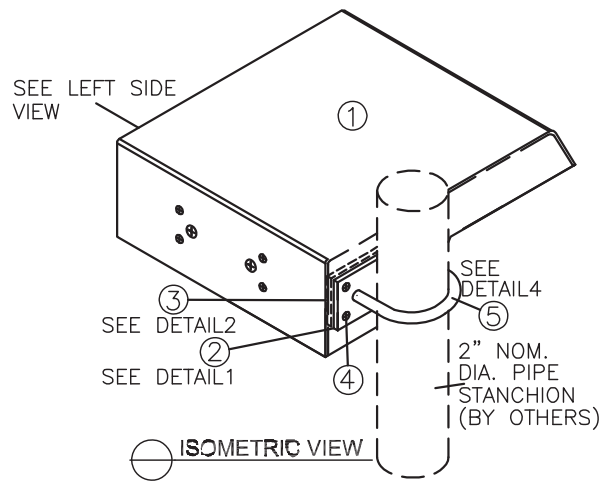
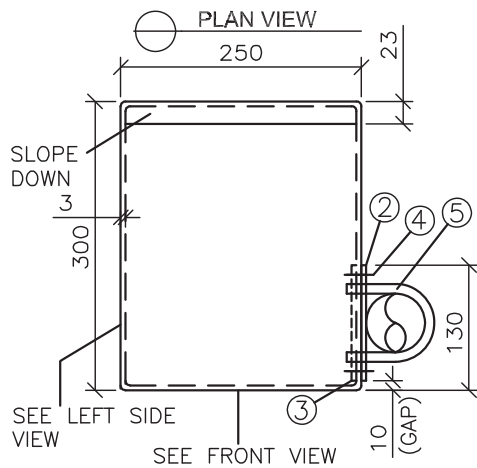
**DETAIL 3**



**U-BOLT SS316  
FOR 2\"/>**

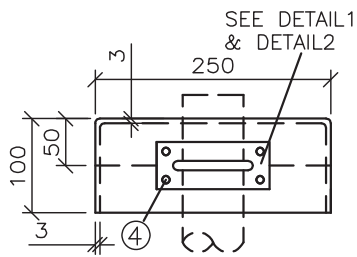
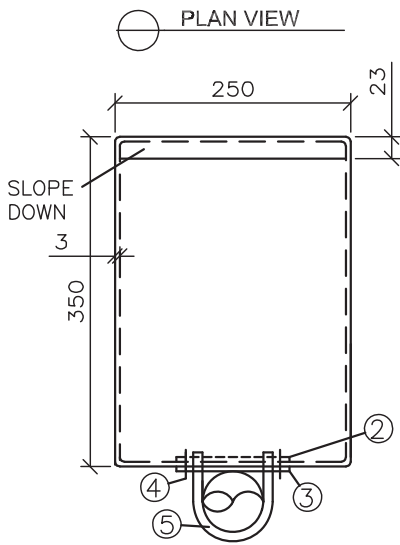
**NOTES:**  
 1. DIMENSIONS IN MM AND NOT TO SCALE  
 2. MATERIAL SPECIFICATION:  
 2.1. FIBERGLASS REINFORCED POLYESTER WITH ANTI-STATIC COATING  
 SIZE: L300 x W250 x D100 x Thk3mm  
 OUTSIDE AND INSIDE SMOOTH MOULDED FINISH  
 2.2. MOUNTING BRACKETS: SS316L  
 2.3. U-BOLTS: SS316

NO.	DESCRIPTION	QTY	UNIT
⑤	U-BOLT, SS316, 2" NOM. DIA. PIPE x M10 WITH 2 NUTS / 2 FW / 2 SW	1	SETS
④	BOLT, HEX HEAD, M5x30L, SS316 WITH 1 NUT / 2FW / 1SW	4	SETS
③	MOUNTING BRACKET, OUTER, L120xW50xThk5mm, SS316L	1	PCS
②	MOUNTING BRACKET, INNER, L120xW50xThk5mm, SS316L	1	PCS
①	SUN SHADE, FRP. L300xW250xD100xThk3mm	1	PCS



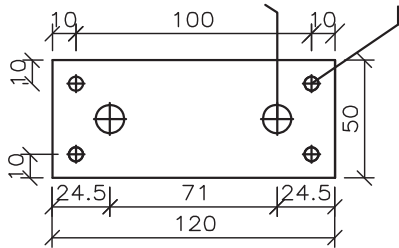
**NOTES:**  
 1. DIMENSIONS IN MM AND NOT TO SCALE  
 2. MATERIAL SPECIFICATION:  
 2.1. FIBERGLASS REINFORCED POLYESTER:  
 SIZE: L300 x W250 x D100 x Thk3mm  
 OUTSIDE AND INSIDE SMOOTH MOULDED FINISH WITH ANTI-STATIC COATING  
 2.2. MOUNTING BRACKETS: SS316L  
 2.3. U-BOLTS: SS316

NO.	DESCRIPTION	QTY	UNIT
⑤	U-BOLT, SS316, 2" NOM. DIA. PIPE x M10 WITH 2 NUTS / 2 FW / 2 SW	1	SETS
④	BOLT, HEX HEAD, M5x30L, SS316 WITH 1 NUT / 2FW / 1SW	4	SETS
③	MOUNTING BRACKET, OUTER, L120xW50xThk5mm, SS316L	1	PCS
②	MOUNTING BRACKET, INNER, L120xW50xThk5mm, SS316L	1	PCS
①	SUN SHADE, FRP. L300xW250xD100xThk3mm	1	PCS

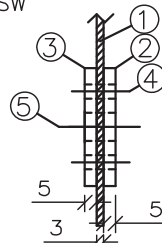


FRONT VIEW

2x12MM DIA. HOLES FOR 316 U-BOLT 2"DIA. PIPExM10  
 4x6MM DIA. HOLES WITH 316 BOLT M5x30L WITH 1NUT/2FW/1SW

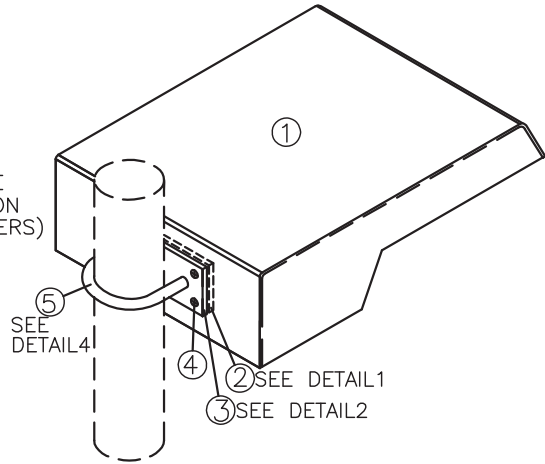


**INNER & OUTER MTG BRACKET**  
**SS316L**  
**DETAIL 1 & DETAIL 2**

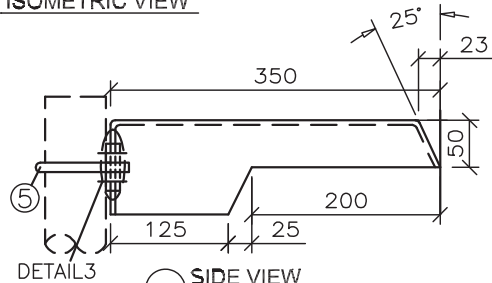


**DETAIL 3**

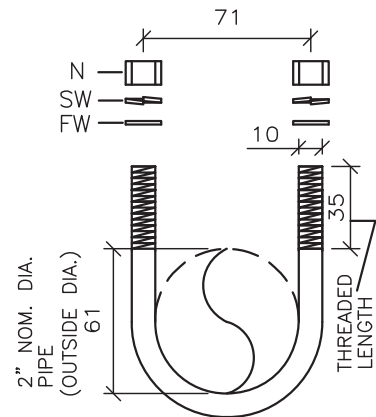
2" NOM. DIA. PIPE STANCHION (BY OTHERS)



ISOMETRIC VIEW



SIDE VIEW

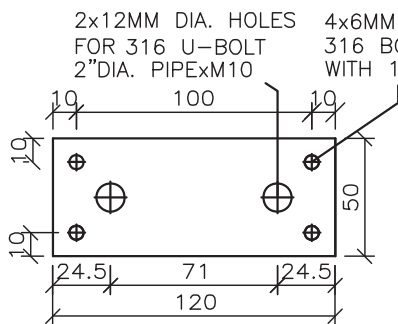
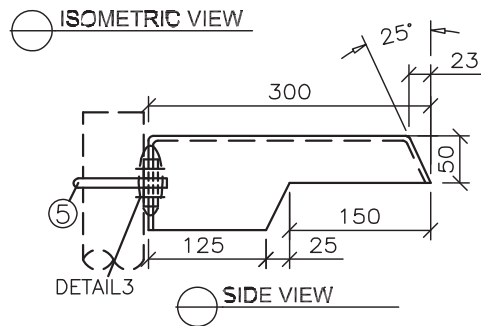
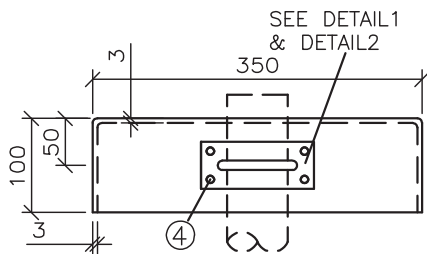
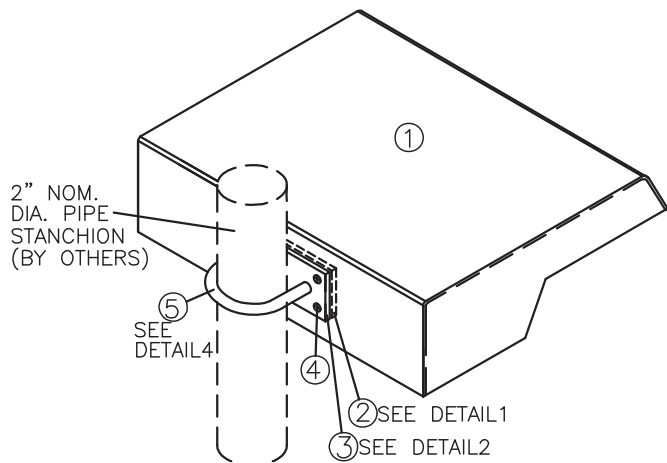
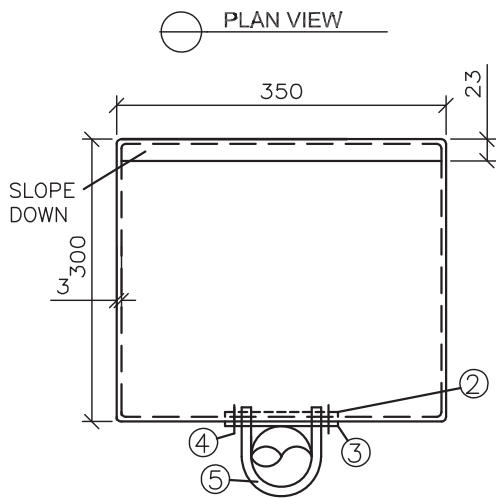


**U-BOLT SS316**  
**FOR 2" NOM. DIA. PIPE**  
**DETAIL 4**

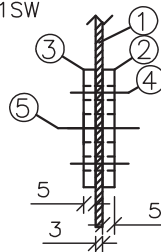
**NOTES:**

1. DIMENSIONS IN MM AND NOT TO SCALE
2. MATERIAL SPECIFICATION:
  - 2.1. FIBERGLASS REINFORCED POLYESTER:
    - SIZE: L350 x W250 x D100 x Thk3mm
    - OUTSIDE AND INSIDE SMOOTH MOULDED FINISH WITH ANTI-STATIC COATING
  - 2.2. MOUNTING BRACKETS: SS316L
  - 2.3. U-BOLTS: SS316

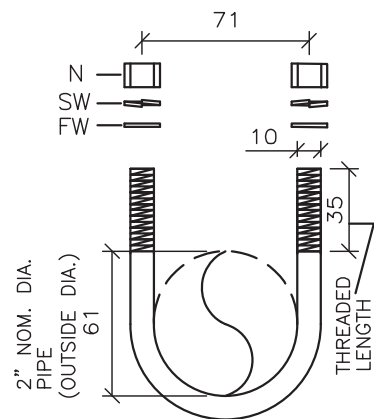
NO.	DESCRIPTION	QTY	UNIT
⑤	U-BOLT, SS316, 2" NOM. DIA. PIPE x M10 WITH 2 NUTS / 2 FW / 2 SW	1	SETS
④	BOLT, HEX HEAD, M5x30L, SS316 WITH 1 NUT / 2FW / 1SW	4	SETS
③	MOUNTING BRACKET, OUTER, L120xW50xThk5mm, SS316L	1	PCS
②	MOUNTING BRACKET, INNER, L120xW50xThk5mm, SS316L	1	PCS
①	SUN SHADE, FRP. L350xW250xD100xThk3mm	1	PCS



**INNER & OUTER MTG BRACKET**  
**SS316L**  
**DETAIL 1 & DETAIL 2**



**DETAIL 3**

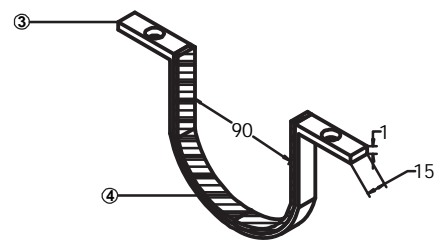
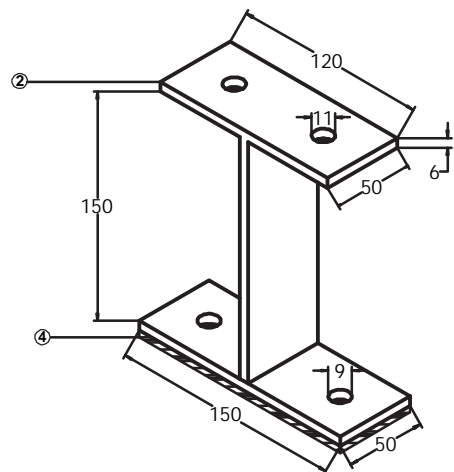
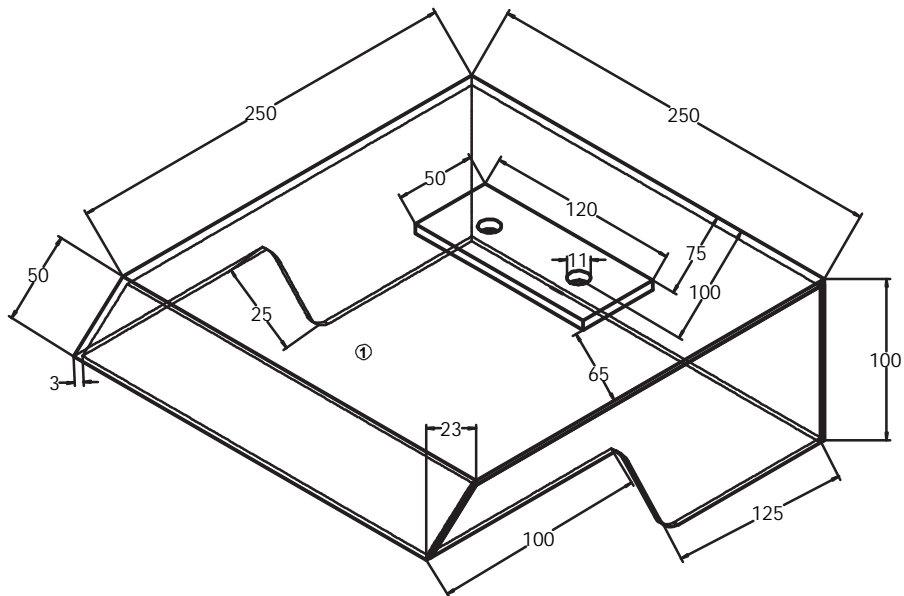


**U-BOLT SS316**  
**FOR 2" NOM. DIA. PIPE**  
**DETAIL 4**

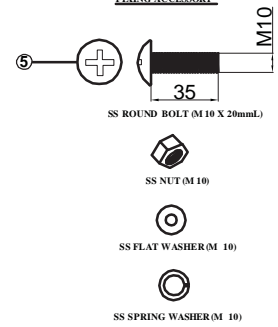
**NOTES:**

1. DIMENSIONS IN MM AND NOT TO SCALE
2. MATERIAL SPECIFICATION:
  - 2.1. FIBERGLASS REINFORCED POLYESTER:
    - SIZE: L300 x W350 x D100 x Thk3mm
    - OUTSIDE AND INSIDE SMOOTH MOULDED FINISH WITH ANTI-STATIC COATING
  - 2.2. MOUNTING BRACKETS: SS316L
  - 2.3. U-BOLTS: SS316

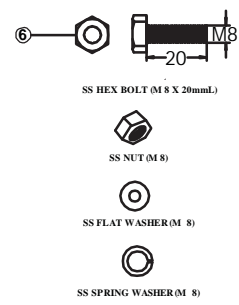
NO.	DESCRIPTION	QTY	UNIT
⑤	U-BOLT, SS316, 2" NOM. DIA. PIPE x M10 WITH 2 NUTS / 2 FW / 2 SW	1	SETS
④	BOLT, HEX HEAD, M5x30L, SS316 WITH 1 NUT / 2FW / 1SW	4	SETS
③	MOUNTING BRACKET, OUTER, L120xW50xThk5mm, SS316L	1	PCS
②	MOUNTING BRACKET, INNER, L120xW50xThk5mm, SS316L	1	PCS
①	SUN SHADE, FRP. L300xW250xD100xThk3mm	1	PCS



**FIXING ACCESSORY**

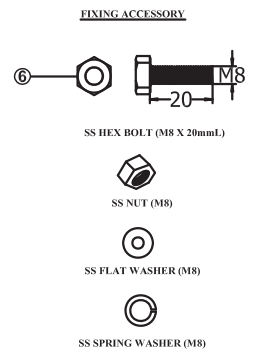
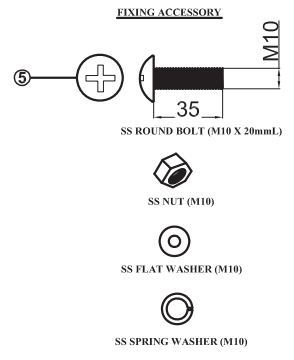
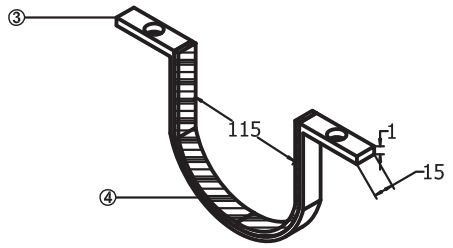
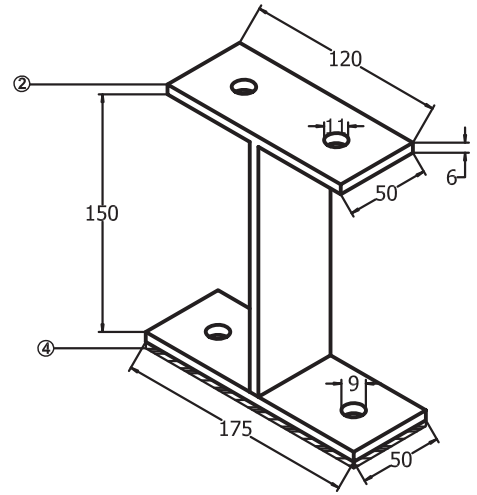
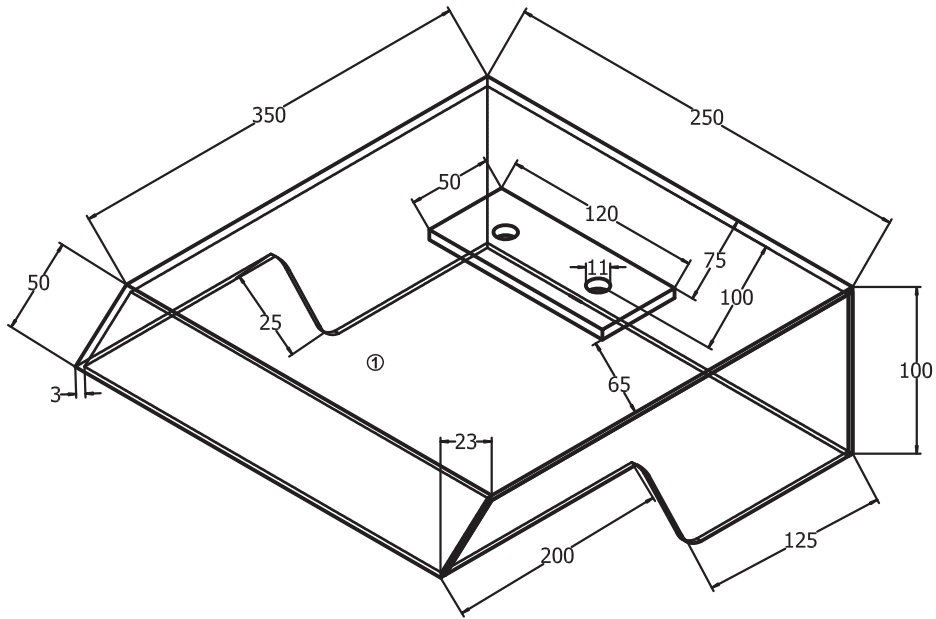


**FIXING ACCESSORY**



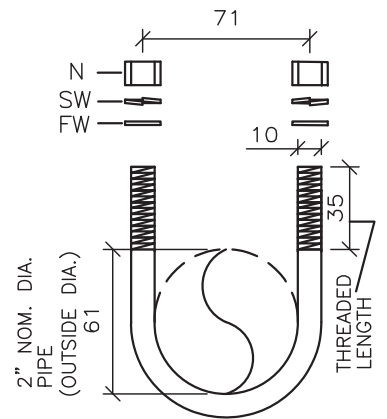
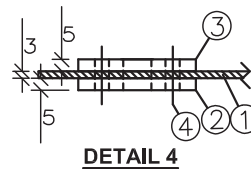
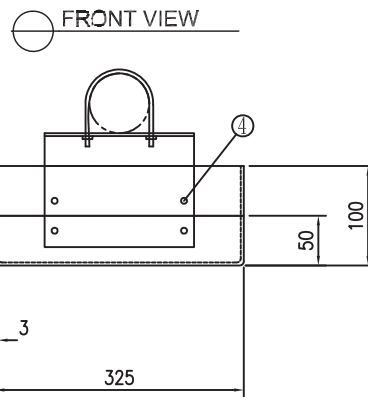
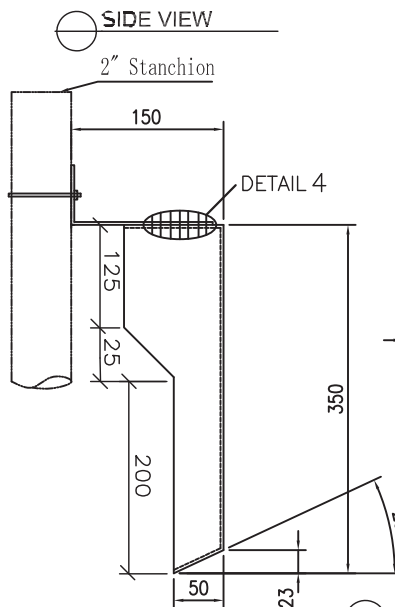
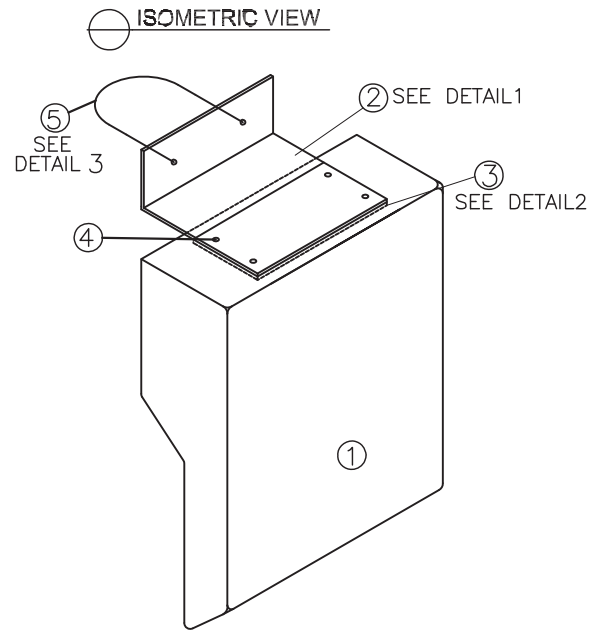
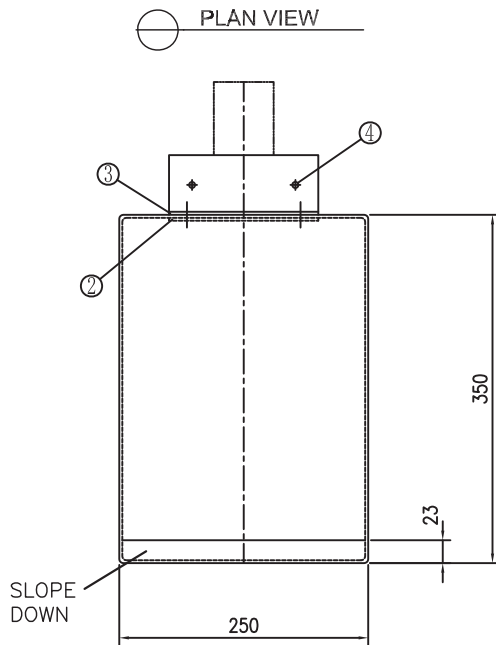
**NOTES:**  
 1. DIMENSIONS IN MM AND NOT TO SCALE  
 2. MATERIAL SPECIFICATION:  
 2.1. FIBERGLASS REINFORCED POLYESTER WITH ANTI-STATIC COATING  
 SIZE: L250 x W250 x H100 x Thk3mm  
 OUTSIDE AND INSIDE SMOOTH MOULDED FINISH  
 2.2. FLAT BAR / STAINLESS U-BAND: SS316L

NO.	DESCRIPTION	QTY	UNIT
⑥	HEX BOLT/NUTS WITH 1 F/S WASHER, SS316	2	SETS
⑤	ROUND BOLT/NUTS WITH 1 F/S WASHER, SS316	2	SETS
④	SILICON RUBBER	1	PCS
③	STAINLESS U-BAND, 1mmThk, SS3 16L	1	PCS
②	FLAT BAR, 50 x 6mmThK, SS3 16L	1	PCS
①	SUN SHADE, FRP. L250xW250xH100xThk3mm	1	PCS

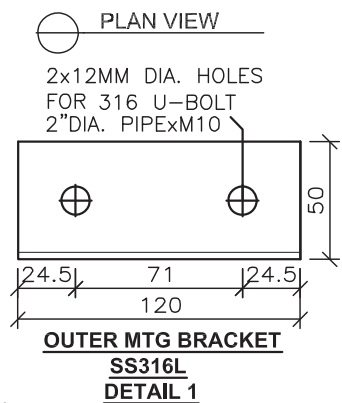


NO.	DESCRIPTION	QTY	UNIT
⑥	HEX BOLT/NUTS WITH 1 F/S WASHER, SS316	2	SETS
⑤	ROUND BOLT/NUTS WITH 1 F/S WASHER, SS316	2	SETS
④	SILICON RUBBER	1	PCS
③	STAINLESS U-BAND, 1mmThk, SS316L	1	PCS
②	FLAT BAR, 50 x 6mmThK, SS316L	1	PCS
①	SUN SHADE, FRP. L350xW250xH100xThk3mm	1	PCS

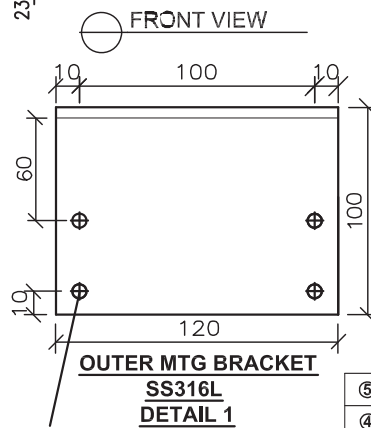
**NOTES:**  
 1. DIMENSIONS IN MM AND NOT TO SCALE  
 2. MATERIAL SPECIFICATION:  
 2.1. FIBERGLASS REINFORCED POLYESTER WITH ANTI-STATIC COATING  
 SIZE: L350 x W250 x H100 x Thk3mm  
 OUTSIDE AND INSIDE SMOOTH MOULDED FINISH  
 2.2. FLAT BAR / STAINLESS U-BAND: SS316L



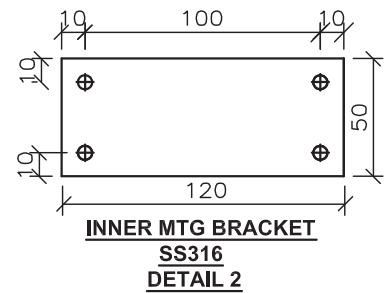
**U-BOLT SS316  
FOR 2" NOM. DIA. PIPE  
DETAIL 3**



**OUTER MTG BRACKET  
SS316L  
DETAIL 1**



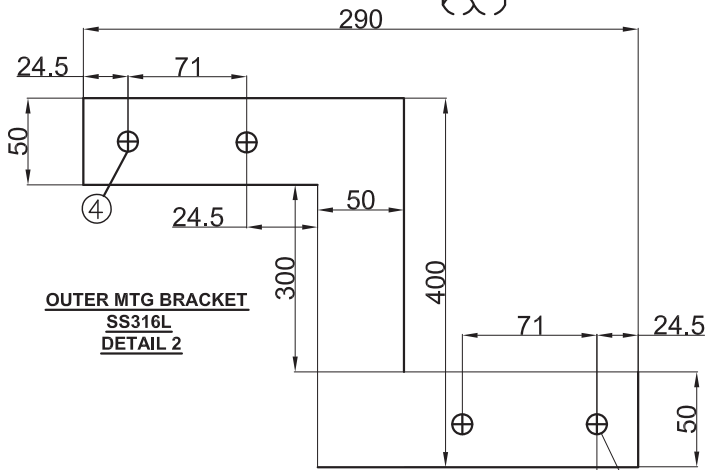
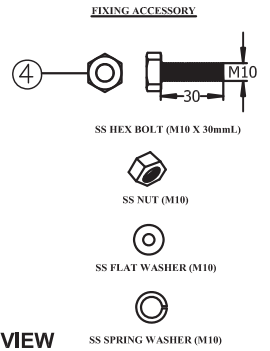
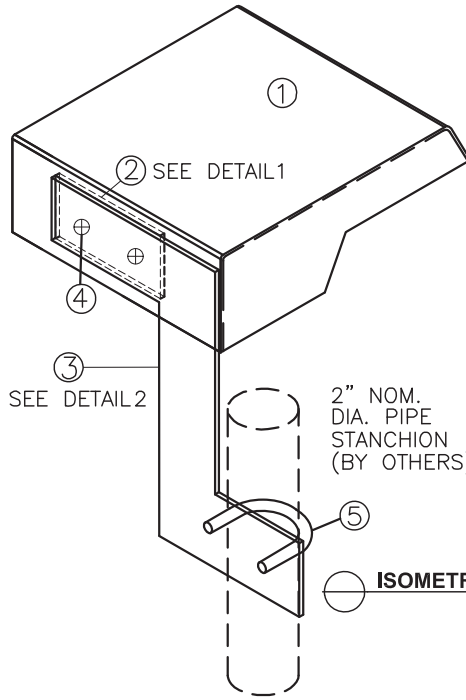
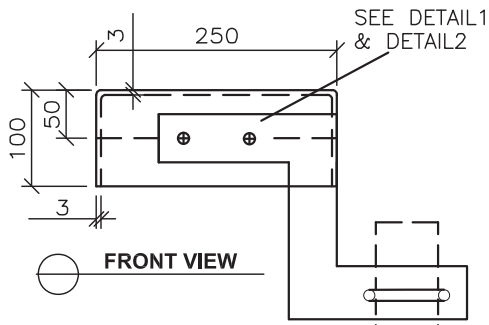
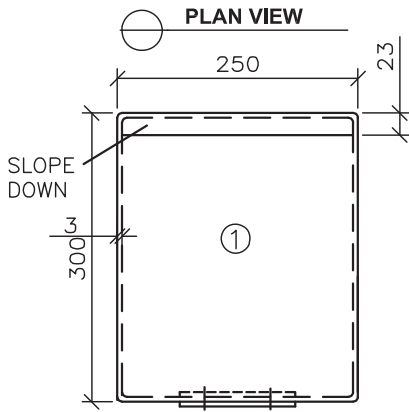
**OUTER MTG BRACKET  
SS316L  
DETAIL 1**



**INNER MTG BRACKET  
SS316  
DETAIL 2**

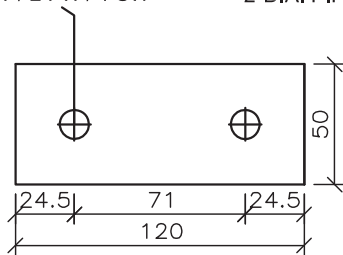
- NOTES:**  
 1. DIMENSIONS IN MM AND NOT TO SCALE  
 2. MATERIAL SPECIFICATION:  
 2.1. FIBERGLASS REINFORCED POLYESTER:  
 SIZE: L350 x W250 x D100 x Thk3mm  
 OUTSIDE AND INSIDE SMOOTH MOULDED FINISH WITH ANTI-STATIC COATING  
 2.2. MOUNTING BRACKETS: SS316L  
 2.3. U-BOLTS: SS316  
 4x6MM DIA. HOLES WITH  
 316 BOLT M5x30  
 WITH 1NUT/2FW/1SW

NO.	DESCRIPTION	QTY	UNIT
5	U-BOLT, SS316, 2" NOM. DIA. PIPE x M10 WITH 2 NUTS / 2 FW / 2 SW	1	SETS
4	BOLT, HEX HEAD, M5x30L, SS316 WITH 1 NUT / 2FW / 1SW	4	SETS
3	MOUNTING BRACKET, INNER L120xW50xThk5mm, SS316L	1	PCS
2	MOUNTING BRACKET, OUTER L120xW100xW50xThk5mm, SS316L	1	PCS
1	SUN SHADE, FRP. L350xW250xD100xThk3mm	1	PCS

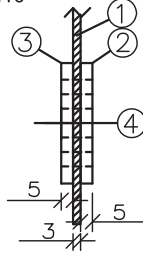


2x12MM DIA. HOLES FOR SS316 BOLT M10x30L WITH 1 NUT / 2 FW / 1 SW

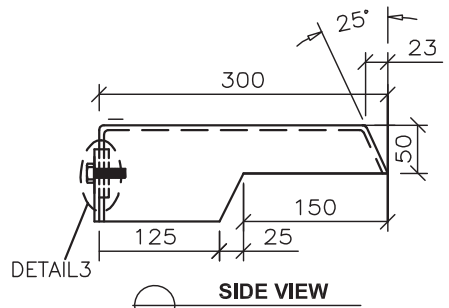
2x12MM DIA. HOLES FOR SS316 U-BOLT 2" DIA. PIPE x M10



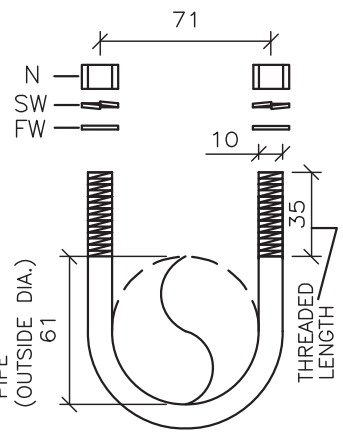
**INNER MTG BRACKET  
SS316L  
DETAIL 1**



**DETAIL 3**



**SIDE VIEW**



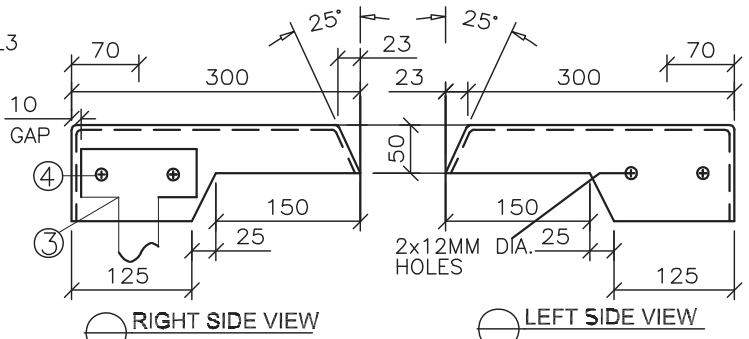
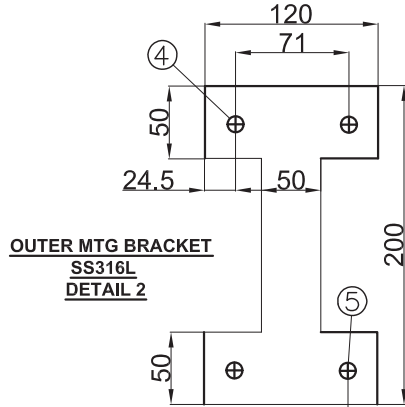
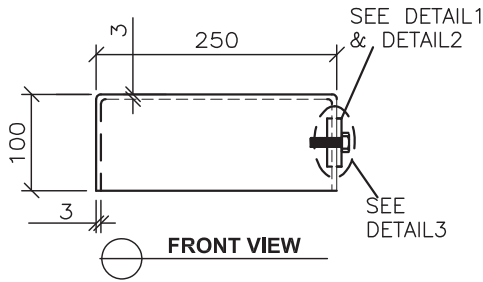
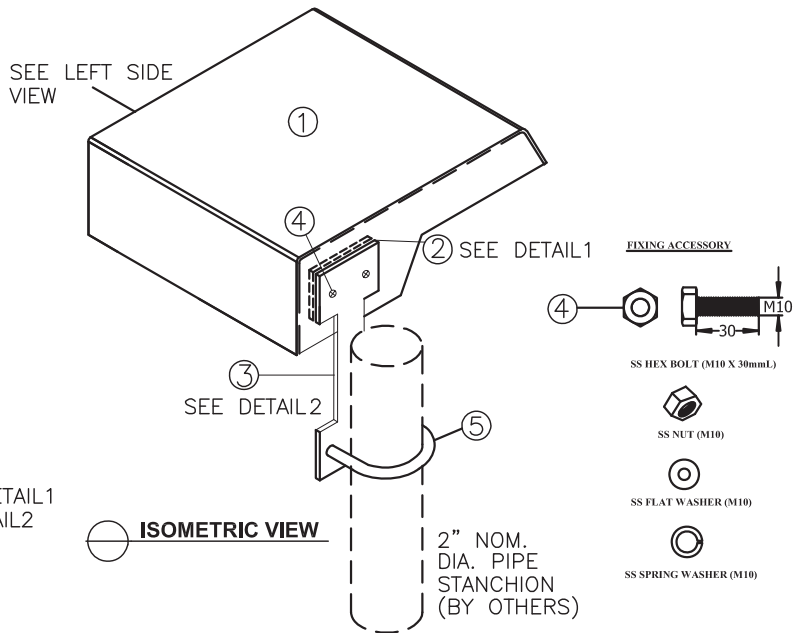
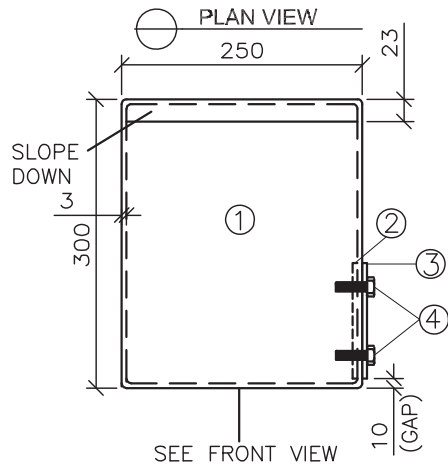
**U-BOLT SS316  
FOR 2" NOM. DIA. PIPE  
DETAIL 4**

**NOTES:**

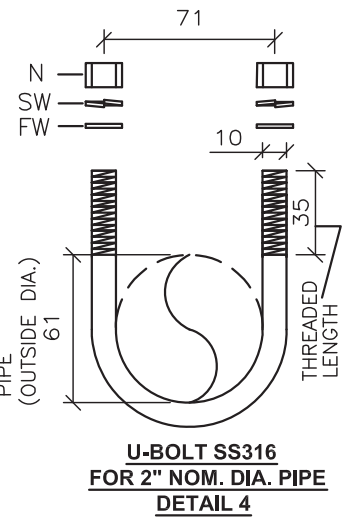
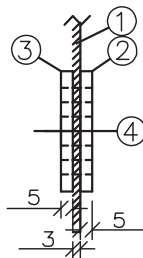
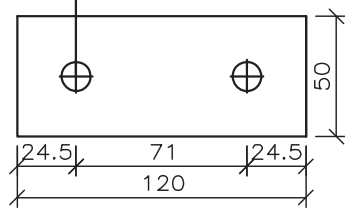
- 1. DIMENSIONS IN MM AND NOT TO SCALE
- 2. MATERIAL SPECIFICATION:
  - 2.1. FIBERGLASS REINFORCED POLYESTER WITH ANTI-STATIC COATING
  - SIZE: L300 x W250 x D100 x Thk3mm
  - OUTSIDE AND INSIDE SMOOTH MOULDED FINISH
- 2.2. OUTER/INNER MOUNTING BRACKETS: SS316L
- 2.3. FIXING ACCESSORY / U-BOLTS: SS316

NO.	DESCRIPTION	QTY	UNIT
5	U-BOLT, SS316, 2" NOM. DIA. PIPE x M10 WITH 2 NUTS / 2 FW / 2 SW	1	SETS
4	BOLT, HEX HEAD, M10x30L, SS316 WITH 1 NUT / 2FW / 1SW	2	SETS
3	MOUNTING BRACKET, OUTER, L400xW290xThk5mm, SS316L	1	PCS
2	MOUNTING BRACKET, INNER, L120xW50xThk5mm, SS316L	1	PCS
1	SUN SHADE, FRP, L300xW250xD100xThk3mm	1	PCS





2x12MM DIA. HOLES FOR SS316 BOLT M10x30L WITH 1 NUT / 2 FW / 1 SW



NOTES:

1. DIMENSIONS IN MM AND NOT TO SCALE

2. MATERIAL SPECIFICATION:

2.1. FIBERGLASS REINFORCED POLYESTER:

SIZE: L300 x W250 x D100 x Thk3mm

OUTSIDE AND INSIDE SMOOTH MOULDED FINISH WITH ANTI-STATIC COATING

2.2. OUTER/INNER MOUNTING BRACKETS: SS316L

2.3. FIXING ACCESSORY / U-BOLTS: SS316

NO.	DESCRIPTION	QTY	UNIT
⑤	U-BOLT, SS316, 2" NOM. DIA. PIPE x M10 WITH 2 NUTS / 2 FW / 2 SW	1	SETS
④	BOLT, HEX HEAD, M10x30L, SS316 WITH 1 NUT / 2FW / 1SW	2	SETS
③	MOUNTING BRACKET, OUTER, L400xW290xThk5mm, SS316L	1	PCS
②	MOUNTING BRACKET, INNER, L120xW50xThk5mm, SS316L	1	PCS
①	SUN SHADE, FRP. L300xW250xD100xThk3mm	1	PCS